

Set up EBS Authentication after RevPro Installation

Overview	1
1. Update Oracle EBS Security Profile to Allow Redirects	2
2. Update RevPro Profile Options	2
3. Compile JSP Files	3
4. Configure ERP Menu	4
5. Create Synonyms (for Revpro30 schema only)	6
Validate RevPro Application Launch	7

Overview

This document describes how to set up the EBS authentication as part of Oracle E-Business Suite (R12) to log in to RevPro new UI as the user who has the Oracle EBS responsibility assigned. The target audience of this document is the existing customers who use Oracle E-Business Suite as the upstream system and use RevPro on-premises solution for aligning with ASC 606 standards.

To set up EBS authentication to log in to RevPro new UI, complete the following steps after RevPro is installed:

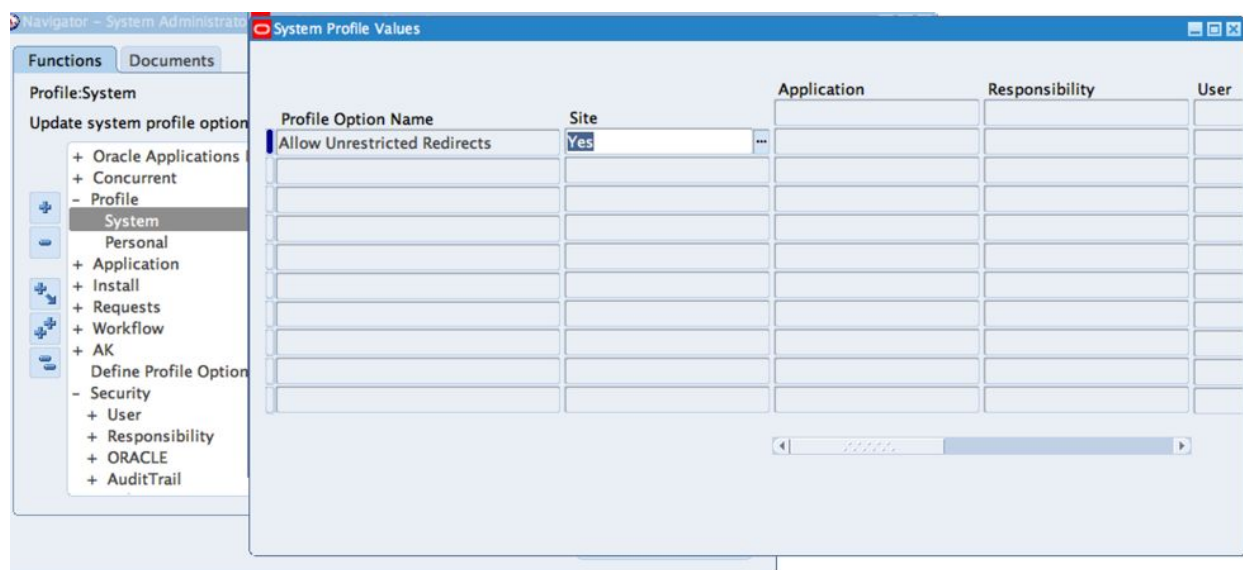
1. Update Oracle EBS security profile to allow redirects for R12.2.6 or above. See [1. Update Oracle EBS Security Profile to Allow Redirects](#).
2. Update the RevPro profile options. See [2. Update RevPro Profile Options](#).
3. Compile the JSP files. See [3. Compile JSP Files](#).
4. Configure the ERP menu. See [4. Configure ERP Menu](#).

After you complete the above steps, you can validate the EBS setup by launching RevPro from the configured ERP menu. See [Validate RevPro Application Launch](#).

1. Update Oracle EBS Security Profile to Allow Redirects

From Oracle EBS 12.2.6, the Allowed Redirects feature is introduced to provide in-depth protection against phishing redirect attacks by enabling the configuration of allowed redirects to avoid unnecessary exposure.

To allow RevPro to redirect from EBS, the Allow Unrestricted Redirects (FND_SEC_ALLOW_UNRESTRICTED_REDIRECT) profile must be set to **Yes** at the site level. Otherwise, an error message that indicates the invalid redirect has been blocked will be reported.



For more information about the security setup for EBS, please refer to the Oracle documentation at http://docs.oracle.com/cd/E26401_01/doc.122/e22952/T156458T156461.htm#7245681.

2. Update RevPro Profile Options

To update RevPro profile options for EBS redirects, execute the following SQL as REVPRO schema with the <domainname>, <hostname>, and <port> values specified based on your environment.

```
UPDATE
  rpro_profile_value_g set
  value ='ORACLE'
where prof_id in (select id from rpro_profile_g where name =
  'AUTHENTICATION_SCHEME')
and rpro_profile_value_pkg.get_profile_level_flag(indicators) =
  'S' and client_id =1;
```

Set up EBS Authentication after RevPro Installation Guide

```

/* Please change level_val to your domain name */
UPDATE rpro_profile_value_g
SET value = '<domainname>.com'
where prof_id in (select id from rpro_profile_g where name =
'REVPRO_URL_DOMAIN')
and rpro_profile_value_pkg.get_profile_level_flag(indicators) =
'S' and client_id =1;

/* UPDATE the responsibility on roles */
--- NOTE: Change the name. Should be the exact same name as
Responsibility
Name used for revpro. eg:name = 'Receivables Manager' ---

UPDATE rpro_role_g
SET name = '<responsibility>'
WHERE id = 1;

/* Update RevPro Launch URL */
--- Please change the level_val to the launch URL ---
UPDATE rpro_profile_value_g
set value = 'https://<hostname>'
where prof_id in (select id from rpro_profile_g where name =
'REVPRO_URL') and
rpro_profile_value_pkg.get_profile_level_flag(indicators) = 'S'
and client_id =1;

/* Update EBS redirect URL */
--- Please change the level_val to the EBS URL ---
UPDATE rpro_profile_value_g
set value = 'http://<hostname>:<port>'
where prof_id in (select id from rpro_profile_g where name =
'EBS_REDIRECT_URL') and
rpro_profile_value_pkg.get_profile_level_flag(indicators) = 'S'
and client_id =1;

COMMIT;

```

3. Compile JSP Files

Compile the revpro_ebs_launch.jsp JSP function under the \$OA_HTML directory as follows. The JSP file is located at <https://leeyo.box.com/s/c05gb3y5it2mfh76duxfr9zu0cfmpxhg>.

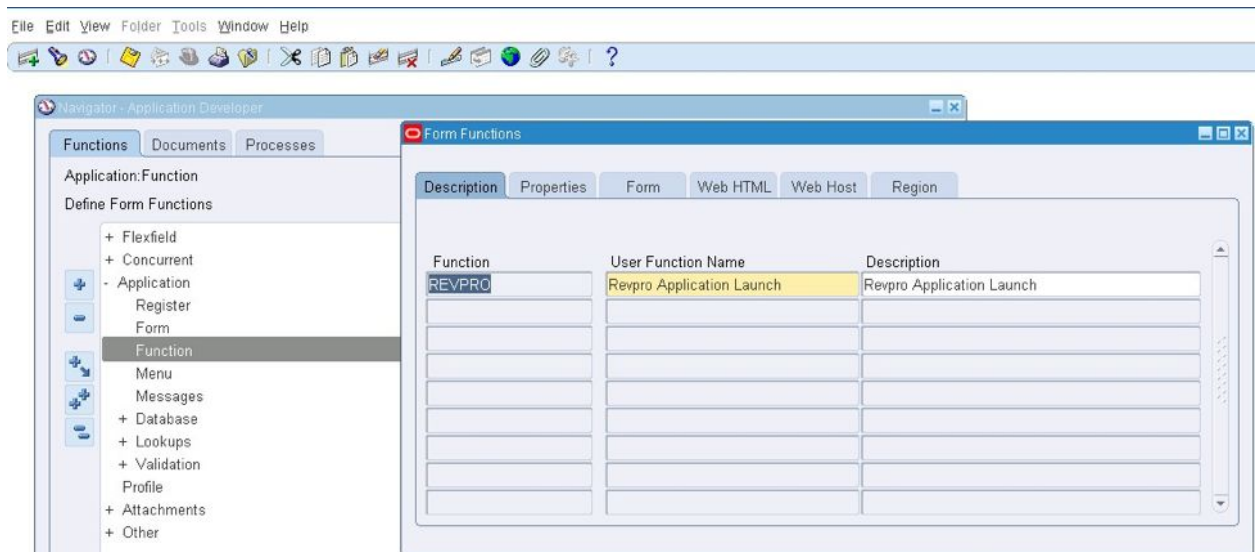
```
Copy revpro_ebs_launch.jsp to $OA_HTML directory.
export PATH=$PATH:$FND_TOP/patch/115/bin
ojspCompile.pl --compile -s "revpro_ebs_launch.jsp" --retry
```

4. Configure ERP Menu

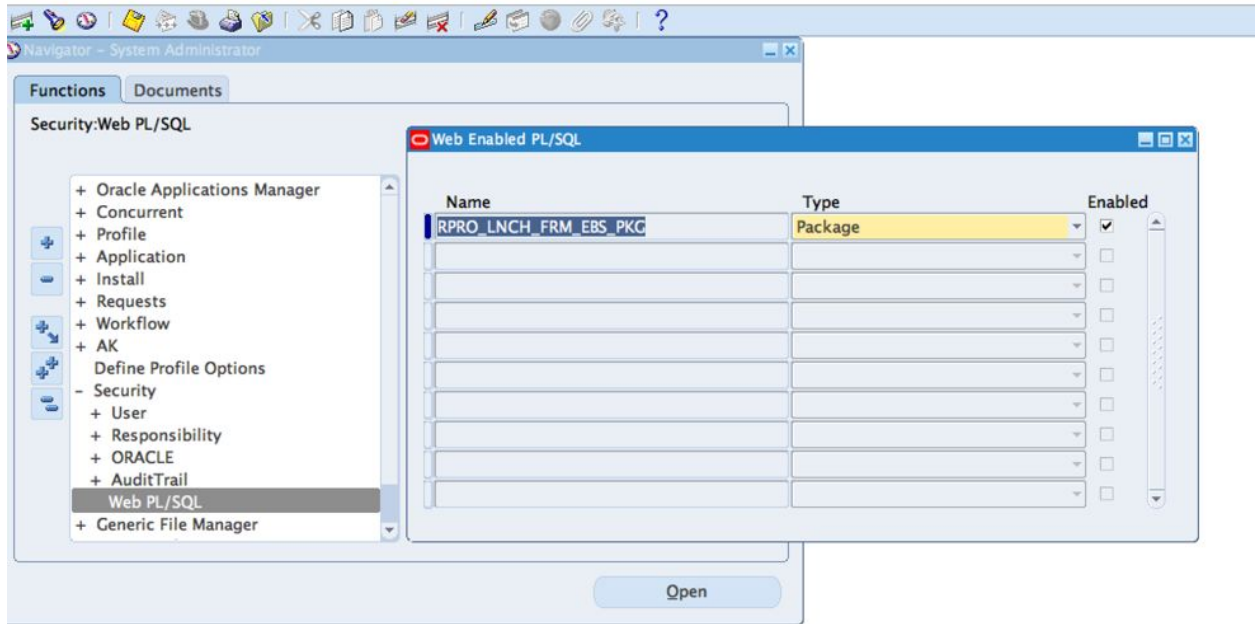
Complete the following steps to set up the ERP menu properly:

1. Create a Form Function named REVPRO with the following required details in each tab as the user who has the Application Developer responsibility assigned.

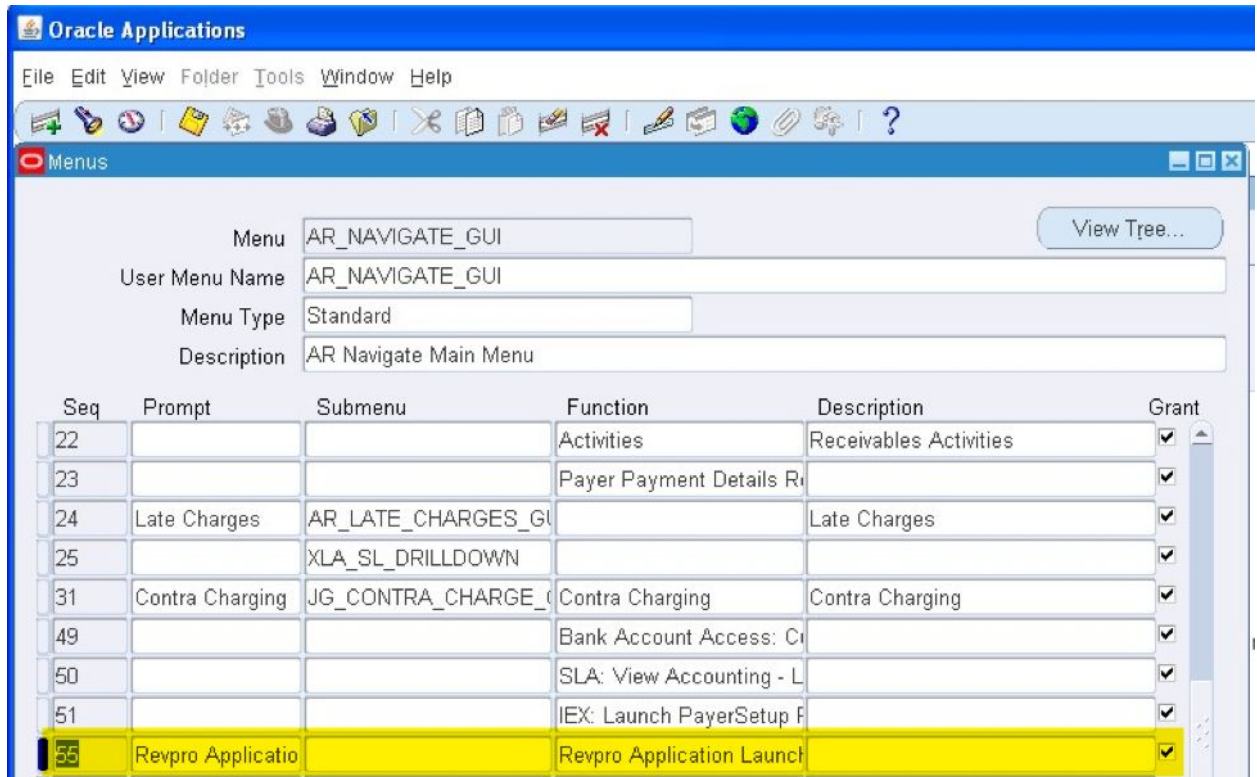
Tab	Field Name	Value
Description	Function	REVPRO
	User Function Name	Revpro Application Launch
	Description	Revpro Application Launch
Properties	Type	SSWA jsp function
	Maintenance Mode Support	None
	Context Dependence	Responsibility
Web HTML	HTML Call	revpro_ebs_launch.jsp



2. Register Web PL/SQL as the user who has the System Administrator responsibility assigned. Under Security on the menu, click **Web PL/SDL** to specify the following information:
 - **Name:** RPRO_LNCH_FRM_EBS_PKG
 - **Type:** Package
 - **Enabled:** Checked



3. Add the REVPRO Form function to the appropriate menu. Identify the menu from which you want to access RevPro and associate the REVPRO Form function with the menu. The following graphic shows an example of adding the REVPRO Form function to the AR_NAVIGATE_GUI menu.



5. Create Synonyms (for Revpro30 schema only)

Note: If there is no multi-schema setup with the Revpro30 schema, you can skip this step.

If you have set up multi-schema with the Revpro30 schema, create synonym in Revpro user for the following Revpro30 objects:

- rpro_lnch_frm_ebs_v
- rpro_role_g
- rpro_book_g
- rpro_ws_session_table
- rpro_utility_pkg
- rpro_book_pkg
- rpro_auth_ws_pkg

```
Sqlplus / as sysdba
```

```
CREATE SYNONYM revpro.RPRO_LNCH_FRM_EBS_V for REVPRO30.RPRO_LNCH_FRM_EBS_V;
```

```
CREATE SYNONYM revpro.rpro_role_g for REVPRO30.rpro_role_g;
```

Set up EBS Authentication after RevPro Installation Guide

```
CREATE SYNONYM revpro.rpro_book_g for REVPRO30.rpro_book_g;  
CREATE SYNONYM revpro.rpro_ws_session_table for REVPRO30.rpro_ws_session_table;  
CREATE SYNONYM revpro.rpro_utility_pkg for REVPRO30.rpro_utility_pkg;  
CREATE SYNONYM revpro.rpro_book_pkg for REVPRO30.rpro_book_pkg;  
CREATE SYNONYM revpro.rpro_auth_ws_pkg for REVPRO30.rpro_auth_ws_pkg;
```

Validate RevPro Application Launch

Based on the menu to which the REVPRO Form function is added, click the RevPro application as the appropriate role. The following graphic indicates you have logged in to RevPro.

